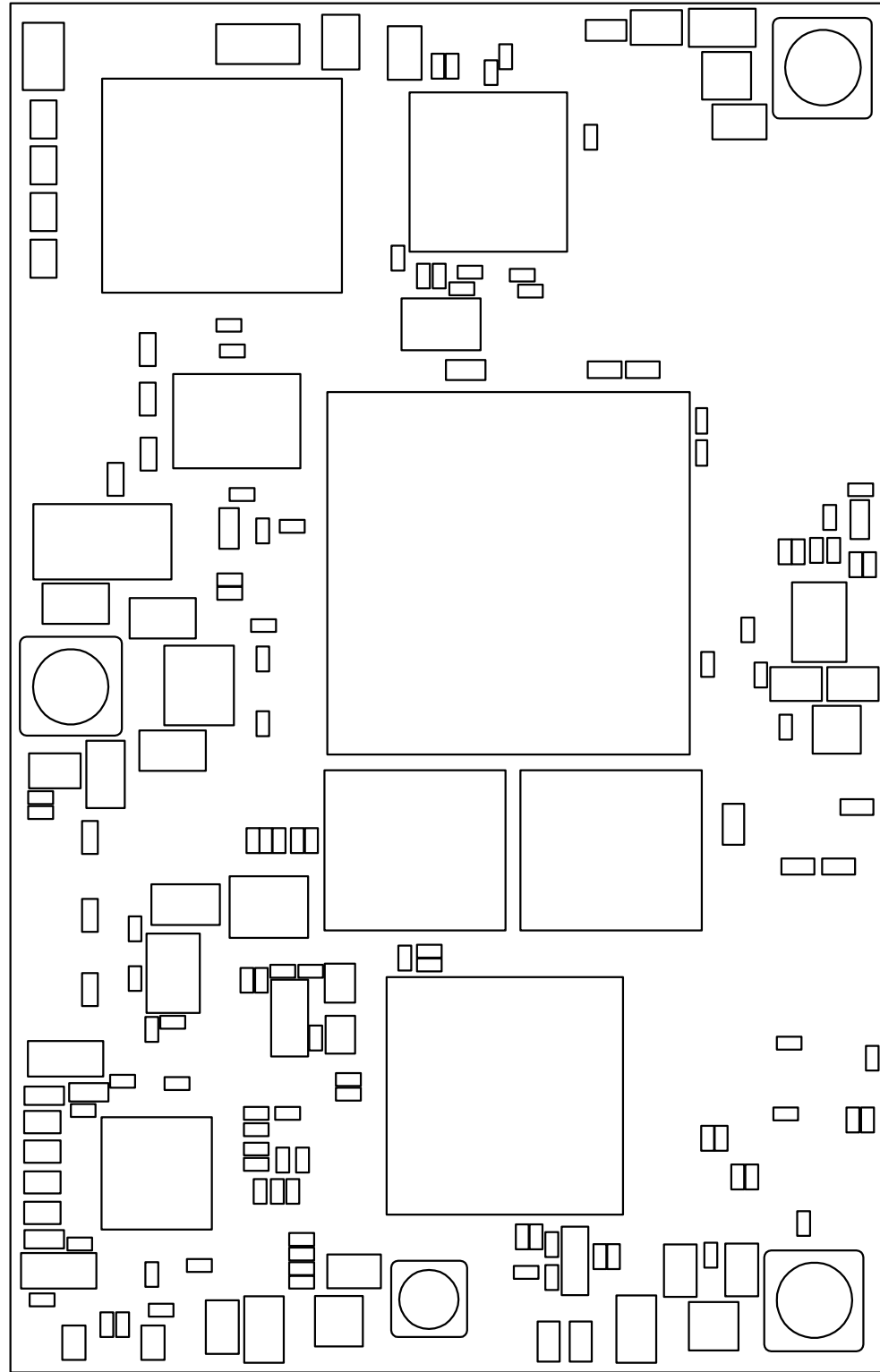


GND	GND	1	2
GigE_AN		3	4
GigE_AP		5	6
GigE_Chassis		7	8
GigE_BN		9	10
GigE_BP		11	12
GigE_Chassis		13	14
GigE_CN		15	16
GigE_CP		17	18
GigE_Chassis		19	20
GigE_DN		21	22
GigE_DP		23	24
GigE_Chassis		25	26
LED0		27	28
LED1	LED2	29	30
GND	GND	31	32
D0	D1	33	34
D2	D3	35	36
GND	GND	37	38
D4	D5	39	40
D6	D7	41	42
GND	GND	43	44
D8	D9	45	46
D10	D11	47	48
GND	GND	49	50
D12	D13	51	52
D14	D15	53	54
GND	GND	55	56
A0	A1	57	58
A2	A3	59	60
GND	GND	61	62
A4	A5	63	64
A6	A7	65	66
GND	GND	67	68
A8	A9	69	70
A10	A11	71	72
GND	GND	73	74
A12	A13	75	76
A14	A15	77	78
GND	GND	79	80
GND	GND	1	2
A16	A17	3	4
A18	A19	5	6
GND	GND	7	8
A20	A21	9	10
A22	A23	11	12
GND	GND	13	14
A24	A25	15	16
AV_REQ	AV_GRANT	17	18
GND	GND	19	20
AV_WRITE	AV_READ	21	22
AV_RESET	AV_WAITREQ	23	24
GND	GND	25	26
AV_READYFORDATA	AV_DATAAVAILABLE	27	28
AV_READDATAVALID	AV_BEGINTRANSFER	29	30
GND	GND	31	32
IN0	IN1	33	34
nBS1	nBS3	35	36
GND	GND	37	38
AV_CLK	nWAIT	39	40
GND	GND	41	42
Com1_RxD	Com1_RTS	43	44
Com1_TxD	Com1_CTS	45	46
SDA	PB14	47	48
SCL	PB15	49	50
GND	GND	51	52
100Tx_Chassis	100Tx_Chassis	53	54
100Tx_RXP	100Tx_ACTIVE_N	55	56
100Tx_RXN	100Tx_ACTIVE_P	57	58
100Tx_RCT		59	60
100Tx_Chassis	100Tx_Chassis	61	62
100Tx_Chassis	100Tx_Chassis	63	64
100Tx_TCT		65	66
100Tx_TXP	100Tx_LINK_P	67	68
100Tx_TXN	100Tx_LINK_N	69	70
100Tx_Chassis	100Tx_Chassis	71	72
GND	GND	73	74
3V3	3V3	75	76
3V3	3V3	77	78
GND	GND	79	80



1	2	GND	GND
3	4	RX0_p	TX0_p
5	6	RX0_n	TX0_n
7	8	GND	GND
9	10	RX1_p	TX1_p
11	12	RX1_n	TX1_n
13	14	GND	GND
15	16	RX2_p	TX2_p
17	18	RX2_n	TX2_n
19	20	GND	GND
21	22	RX3_p	TX3_p
23	24	RX3_n	TX3_n
25	26	GND	GND
27	28	RX4_p	TX4_p
29	30	RX4_n	TX4_n
31	32	GND	GND
33	34	RX5_p	TX5_p
35	36	RX5_n	TX5_n
37	38	GND	GND
39	40	RX6_p	TX6_p
41	42	RX6_n	TX6_n
43	44	GND	GND
45	46	RX7_p	TX7_p
47	48	RX7_n	TX7_n
49	50	GND	GND
51	52		
53	54		
55	56		
57	58		
59	60	GND	DATA1_Cyc
61	62	FLASH_nCE_Cyc	DATA0_Cyc
63	64	nCE_Cyc	nCONFIG_Cyc
65	66	3V3	CONF_DONE_Cyc
67	68	GND	DCLK_Cyc
69	70	GND	CYC_TDI
71	72		
73	74	2V5_PLL	CYC_TMS
75	76	2V5_PLL	CYC_TDO
77	78	GND	CYC_TCK
79	80	GND	GND
1	2	GND	GND
3	4	nCS0	nCS2
5	6	nOE	nWE
7	8	GND	GND
9	10	D16	D17
11	12	D18	D19
13	14	GND	GND
15	16	D20	D21
17	18	D22	D23
19	20	GND	GND
21	22	D24	D25
23	24	D26	D27
25	26	GND	GND
27	28	D28	D29
29	30	D30	D31
31	32	GND	GND
33	34	CLK_IN_p	CLK_IN_n
35	36	GND	GND
37	38	CLKOUT	
39	40		
41	42		
43	44	nRESET_OUT	NRST
45	46	PB20	PB21
47	48	GND	GND
49	50	PB18	PB19
51	52	PB16	PB17
53	54	GND	GND
55	56	PB2	PB3
57	58	PB0	PB1
59	60	GND	GND
61	62	HDPA	AT_TDO
63	64	HDMA	AT_RTCK
65	66	GND	AT_TCK
67	68	GND	AT_TMS
69	70	GND	AT_TDI
71	72	GND	AT_NTRST
73	74	GND	GND
75	76	3V3	3V3
77	78	3V3	3V3
79	80	GND	GND